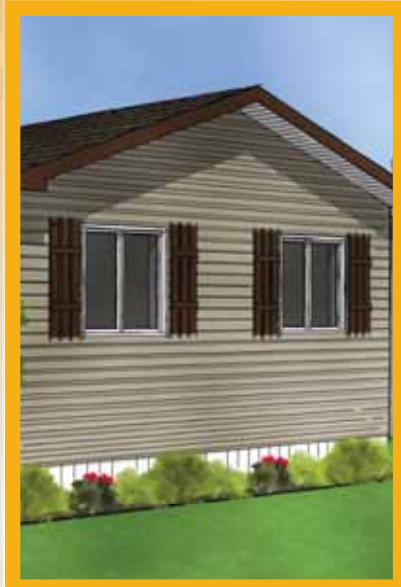




The CJ Series



20' Wide Homes



Standards and Specifications



For over **30** years, **SRI** has been providing Canadian families with **attractive affordable housing** that now totals over **25,000** homes. Not only is your **SRI Home** warranted for one year on materials and workmanship, your **SRI home** also carries a **10 year structural warranty**.

The CJ Series

EXTERIOR

- ☆ Maintenance Free Vinyl Siding and Corners
- ☆ Painted Wood Fascia
- ☆ 25 year Fibreglass Shingles
- ☆ 4/12 Pitch Roof
- ☆ Insulated 32" Steel Exterior Doors with Peephole & Deadbolt
- ☆ 2x6 Exterior Walls with Belt Rails
- ☆ 12" Engineered "I" Joists at 16" o.c. Floor System
- ☆ Engineered Roof Trusses
- ☆ Weatherproof GFI Protected Receptacle
- ☆ Exterior Frost Free Tap with Check Valve
- ☆ Coach Light at All Exterior Doors
- ☆ Lever Handle Doors
- ☆ PVC Windows complete with Screens
- ☆ Separate Receptacle for Heat Tape
- ☆ Residential Eaves (3 Sides)

INTERIOR

- ☆ Cathedral Ceiling in Living Room, Dining Room and Kitchen
- ☆ Decorative Vinyl Covered Drywall
- ☆ Insulation Values=R-34 in Ceiling, R-20 in Side Walls and R-28 in Floors
- ☆ Satin Platinum Hardware, Lighting and Plumbing Fixtures
- ☆ 1" Venetian Blinds on all Windows
- ☆ 5/8" Subfloor-Glued, Nailed and Screwed
- ☆ 100% Nylon Carpet in Living Room, Hall and All Bedrooms
- ☆ No wax Quality Vinyl Floor Covering
- ☆ Solid Shelving in all Closets
- ☆ White Receptacles and light Switches
- ☆ Ceiling Lights in all Bedrooms

KITCHEN

- ☆ 18 cu. ft. Frost Free Refrigerator
- ☆ 30" Electric Range with Clock and Timer
- ☆ 2-Speed White Rangehood Fan with Light-Vented to Exterior
- ☆ White Kitchen Appliances - Black Optional
- ☆ Single Lever Kitchen Faucet with Sink Spray
- ☆ Monterrey Modular Cabinets with Backs
- ☆ Laminated Countertops with 6" Backsplash
- ☆ Microwave Cabinet with Separate Circuit (Most Models)
- ☆ Double Stainless Steel Sink
- ☆ Roller Drawer Hardware

BATHROOM

- ☆ Tub/Shower Complete with Single Lever Pressure Balanced Faucet
- ☆ Single Lever Faucet at Vanity Sink
- ☆ Shower Head in Main Bathroom
- ☆ Shower Rods and Shower Curtain in Main Bathroom
- ☆ Exhaust Fan complete with Humidistat in Main Bath
- ☆ Exhaust Fan in Ensuite on Separate Switch
- ☆ Cosmetic box in Main Bath
- ☆ White Bathroom Fixtures
- ☆ GFI Protected Receptacle

UTILITIES

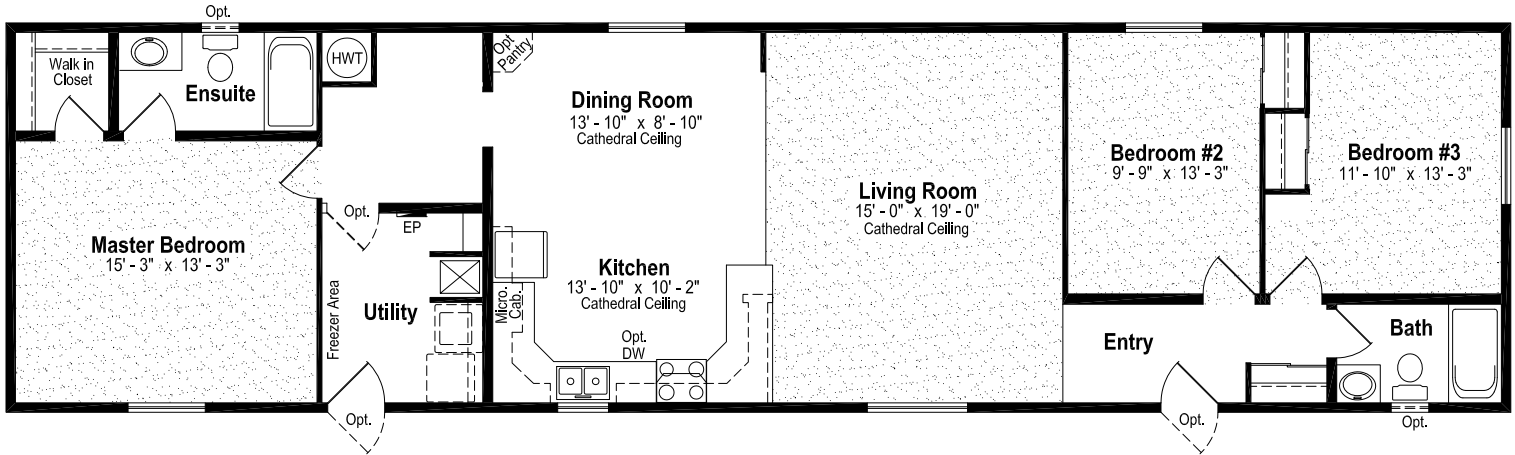
- ☆ 33 Imperial Gallon (40 U.S. Gallon) Electric Water Heater
- ☆ Natural Gas Furnace with Electronic Ignition
- ☆ Life Saving Smoke Detector(s)
- ☆ Dryer Vent Discharge
- ☆ Overhead Solid Shelf at Washer and Dryer Area
- ☆ 100 amp. Service Panel
- ☆ Electric Conduit through Floor
- ☆ Built to Meet or Exceed Applicable Provincial Codes



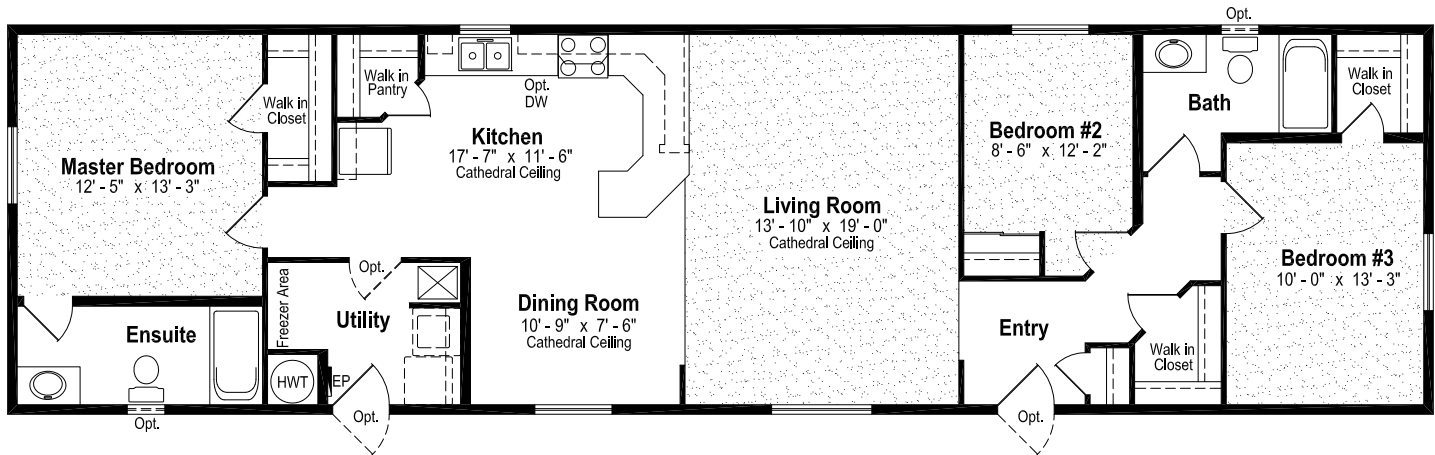
The CJ Series



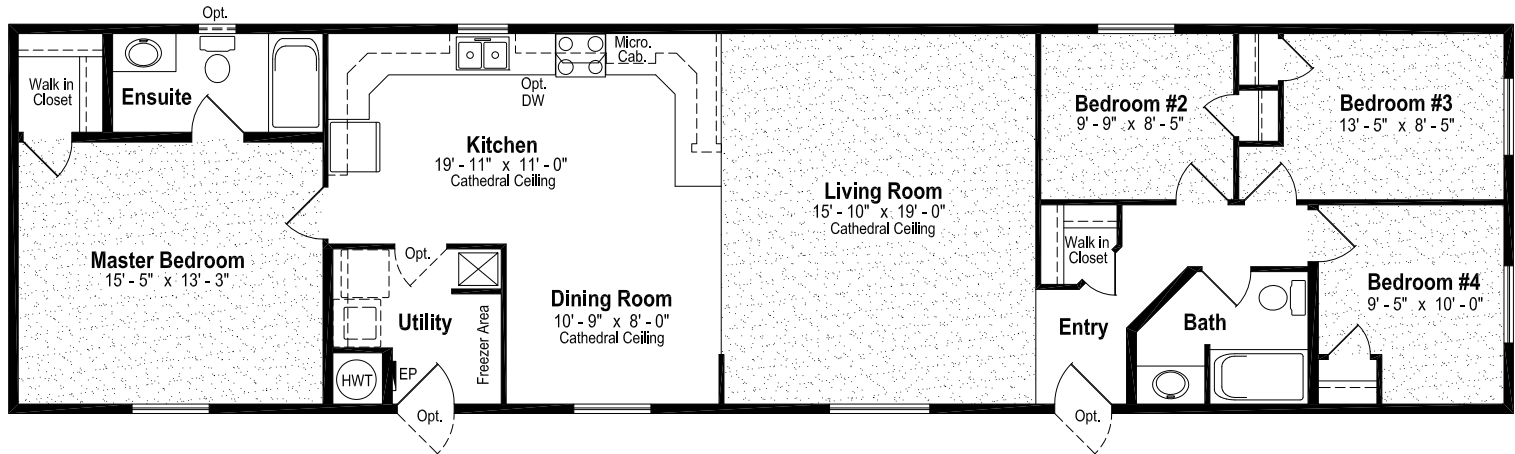
CJ-3000 20' x 76' 1,520 sq. ft.



CJ-3004 20' x 72' 1,440 sq. ft.



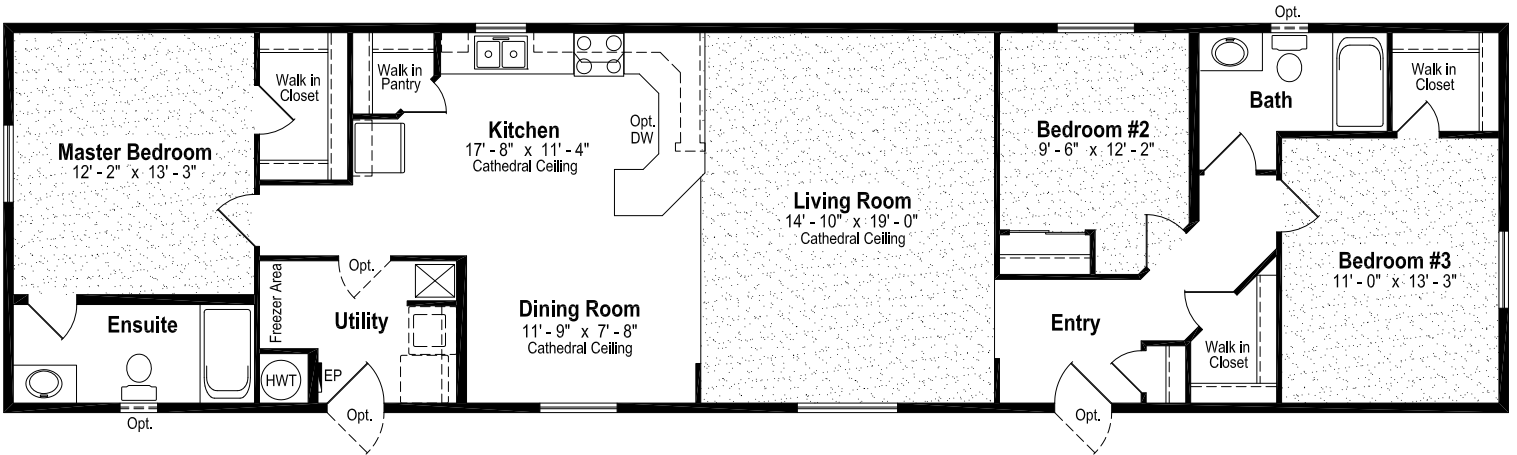
CJ-3005 20' x 76' 1,520 sq. ft.



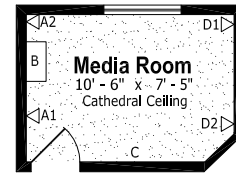
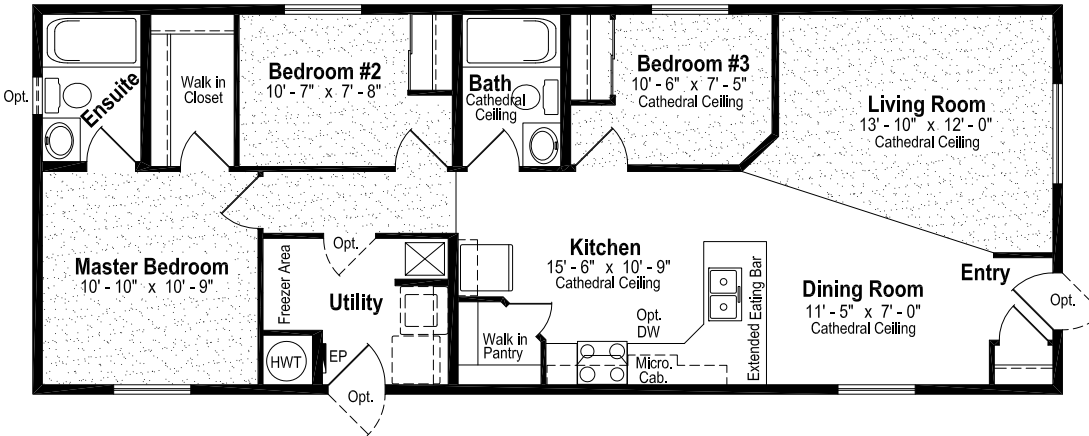
The CJ Series



CJ-3006 20' x 76' 1,520 sq. ft.

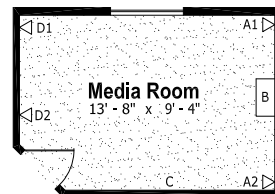
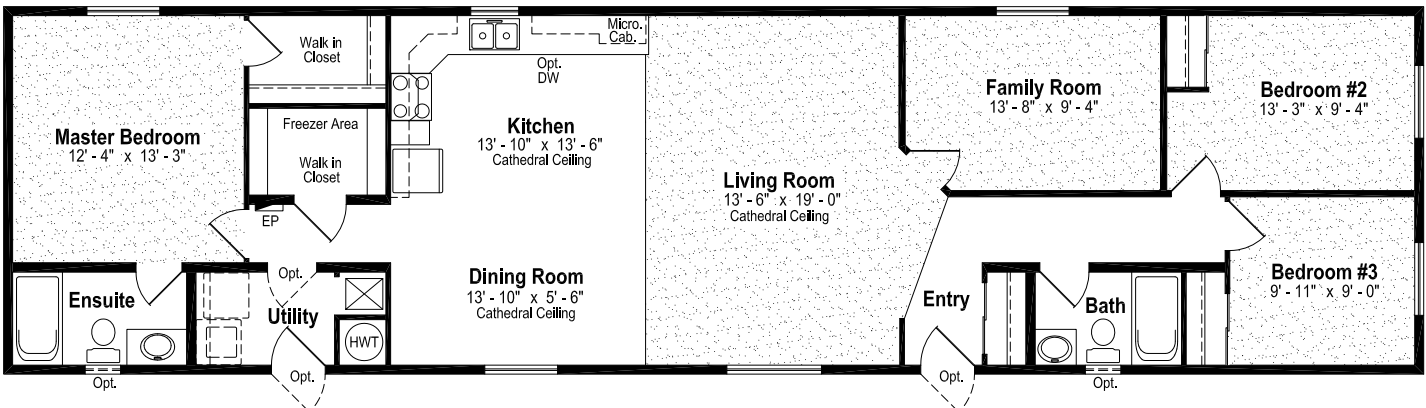


CJ-3009 20' x 52' 1,040 sq. ft.



- Optional Media Room**
ILO Bedroom #3
 A - Front Speakers @ 18"
 B - Center Speaker (Wired by Others)
 C - Subwoofer
 D - Rear Speakers @ 18"

CJ-3011 20' x 76' 1,520 sq. ft.

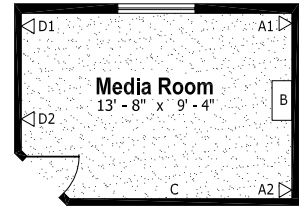
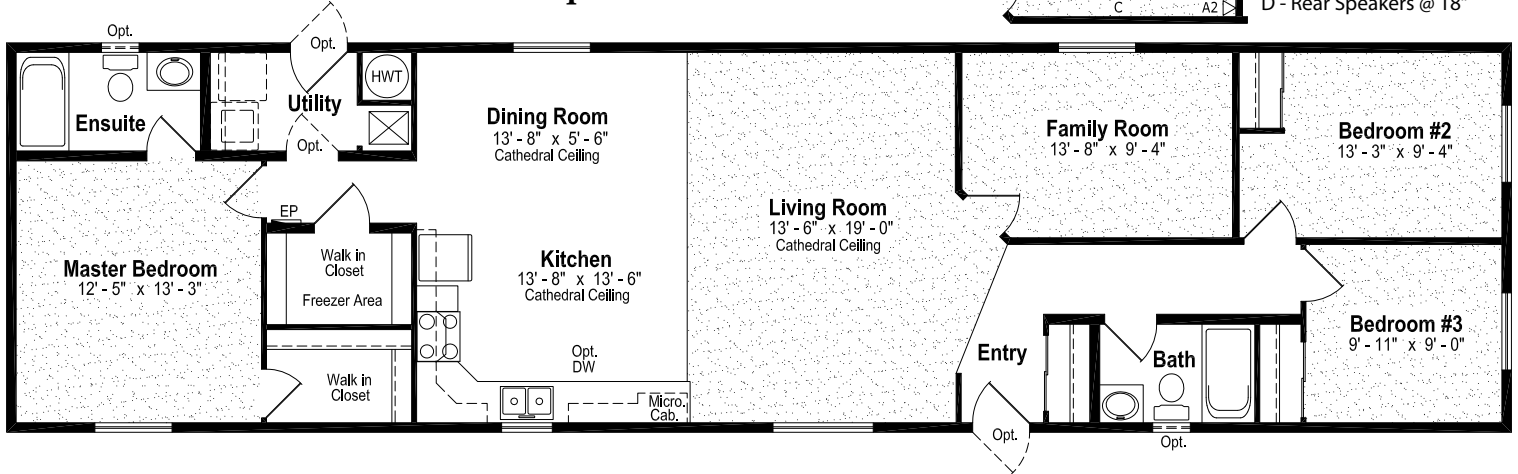


- Optional Media Room**
ILO Family Room
 A - Front Speakers @ 18"
 B - Center Speaker (Wired by Others)
 C - Subwoofer
 D - Rear Speakers @ 18"

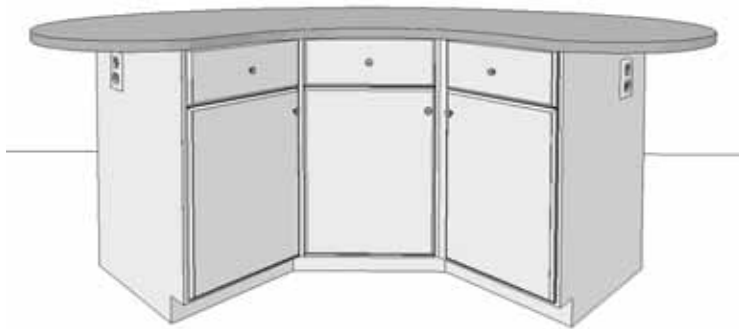
The CJ Series



CJ-3013 20' x 76' 1,520 sq. ft.

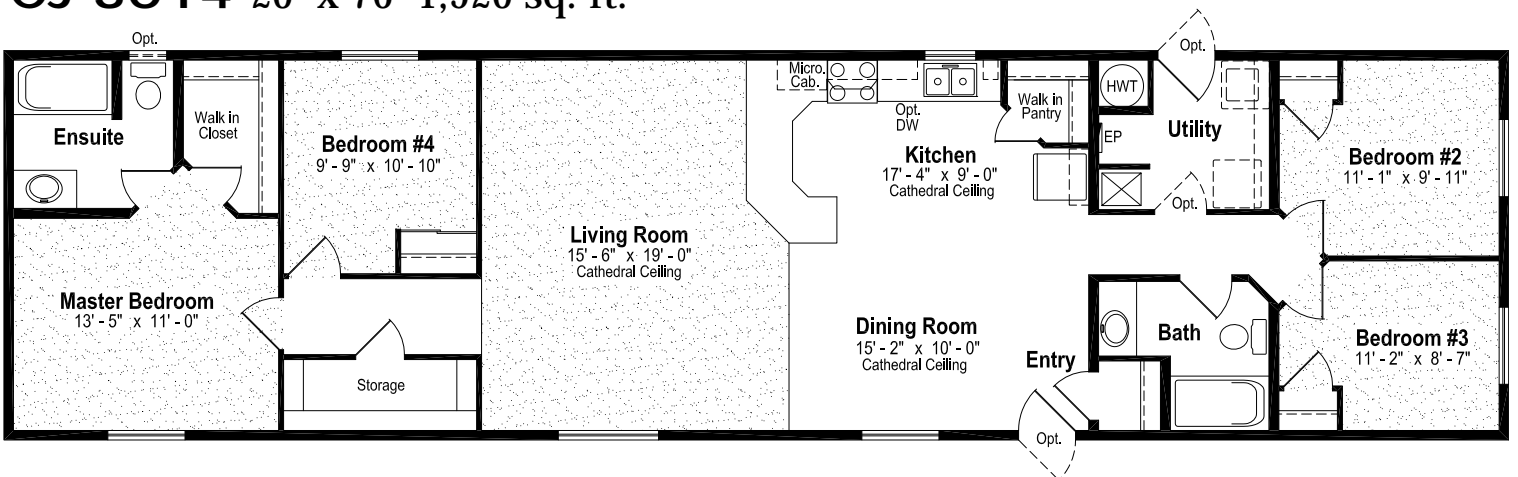


Optional Media Room
 ILO Family Room
 A - Front Speakers @ 18"
 B - Center Speaker (Wired by Others)
 C - Subwoofer
 D - Rear Speakers @ 18"



"Caymen" Optional Kitchen Island

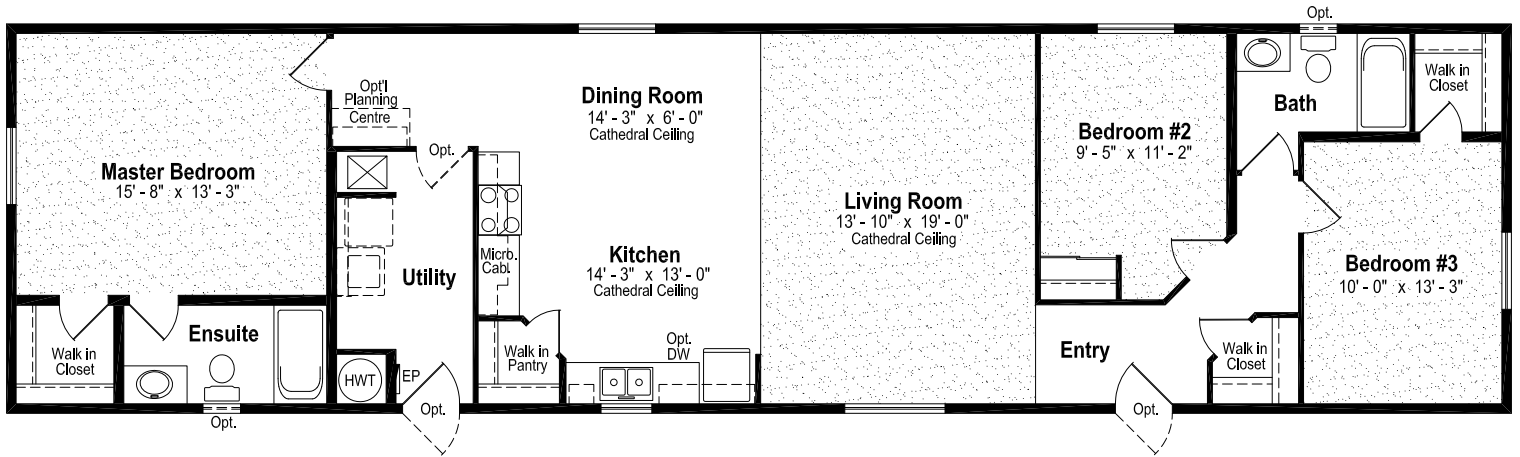
CJ-3014 20' x 76' 1,520 sq. ft.



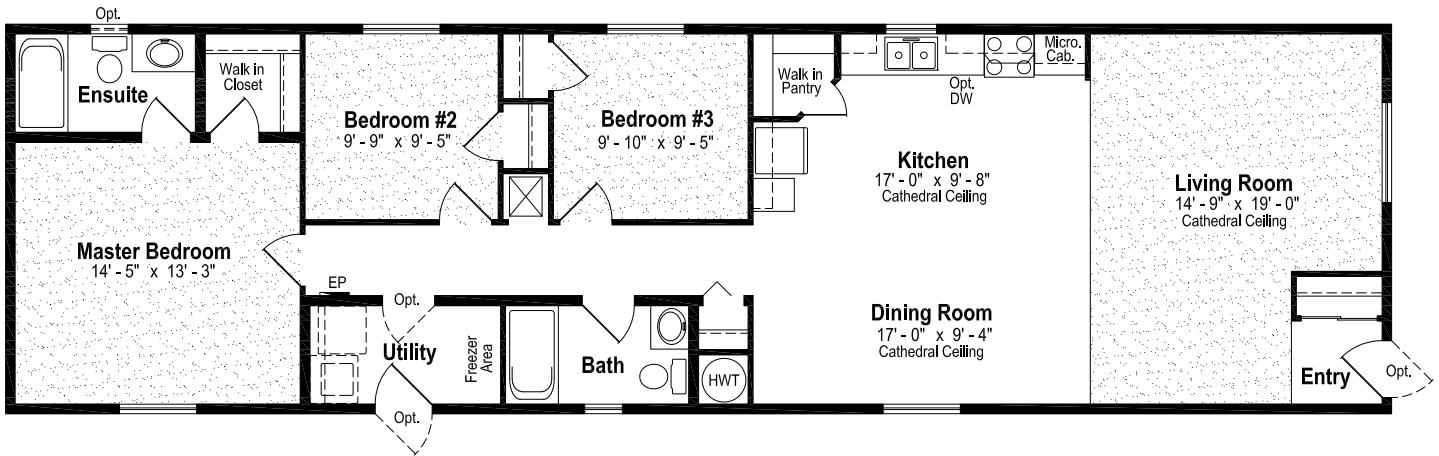
The CJ Series



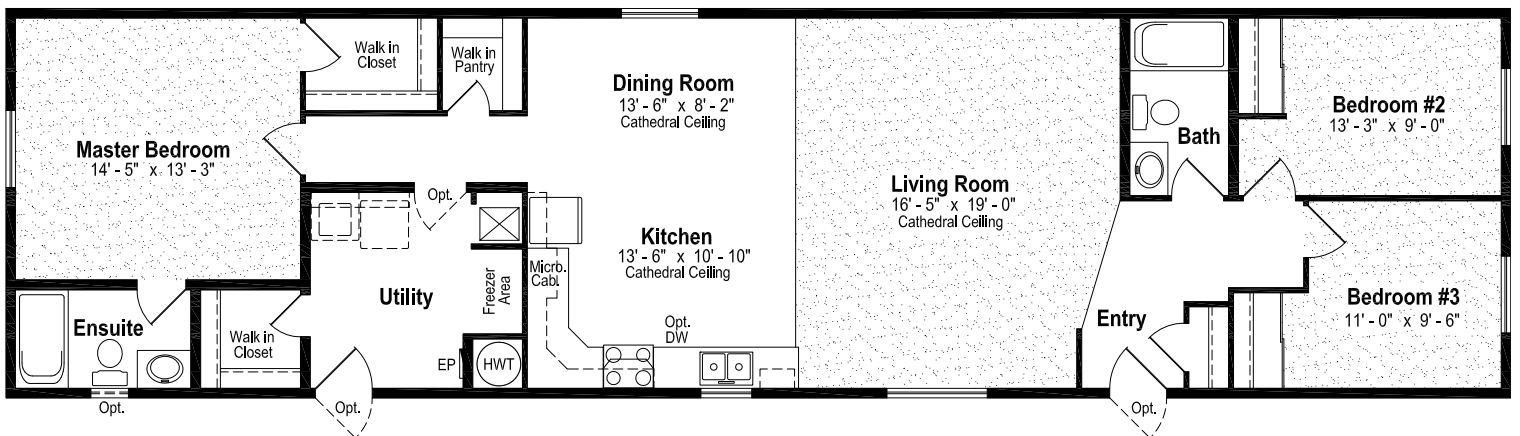
CJ-3015 20' x 76' 1,520 sq. ft.



CJ-3017 20' x 70' 1,400 sq. ft.



CJ-3018 20' x 76' 1,520 sq. ft.



EXTERIOR

- Shutters (Two Styles)
- Diamond Cut Ceilings
- Three and Four Light Bay Windows
- Palladian Windows
- Octagon Windows
- Acrylic Block Windows
- White or Pewter Lattice in Windows
- Skylights
- Patio, Garden and Cottage Doors
- Storm Doors
- Exterior Door with Half Round, 9 Lite or Franklin Insert
- Turbine Vents
- Electric Door Chimes
- Exterior Recessed Pot Light(s)
- Extra Exterior GFI
- High Snow Load Roof
- 8' Sidewalls

INTERIOR

- Fully Finished Drywall
- Media Room Package
- Laminate Flooring
- Upgrade Vinyl Floor Coverings
- Berber Carpet
- French Doors
- Mirrored Closet Doors
- Freezer Cabinets
- Soak Sink with Cabinet
- Utility Room Door
- Ceiling Fan with Lights
- Chandeliers
- Recessed Fluorescent Lights
- Mini Tube Under Counter Lighting
- Archways
- 8' Sidewalls

KITCHEN

- Oak, Maple, Cherry or Espresso Raised Panel, Shaker Style or PVC Cabinets (Some restrictions apply)

KITCHEN (Cont'd)

- Wand Style Deluxe Single Lever Kitchen Faucet
- Corner Glass Cabinet Doors
- Island Work Centre
- Appliance Garage
- Planning Centre
- Lazy Susan
- Granite Composite Upgrade Sink
- Oak or Maple Counter Edging
- Corian Executive Counter Edging
- Black Appliances
- Built-In Dishwasher
- Combination Microwave/Range Hood
- Eye Level Oven and Cook Top Range
- Self Cleaning Range
- Two Door Side by Side Refrigerator
- Free Standing Bottom Mount Refrigerator

BATHROOM

- 72" Tub/Shower
- Corner Oval Jetted Tub
- 2 Person Jetted Tub
- 36", 48" or 60" Shower c/w Glass Doors
- Handicap Toilet
- Tri-Mirror Medicine Cabinet
- Grab Bars
- Deluxe Shower Curtain
- Banjo Countertop on Vanity

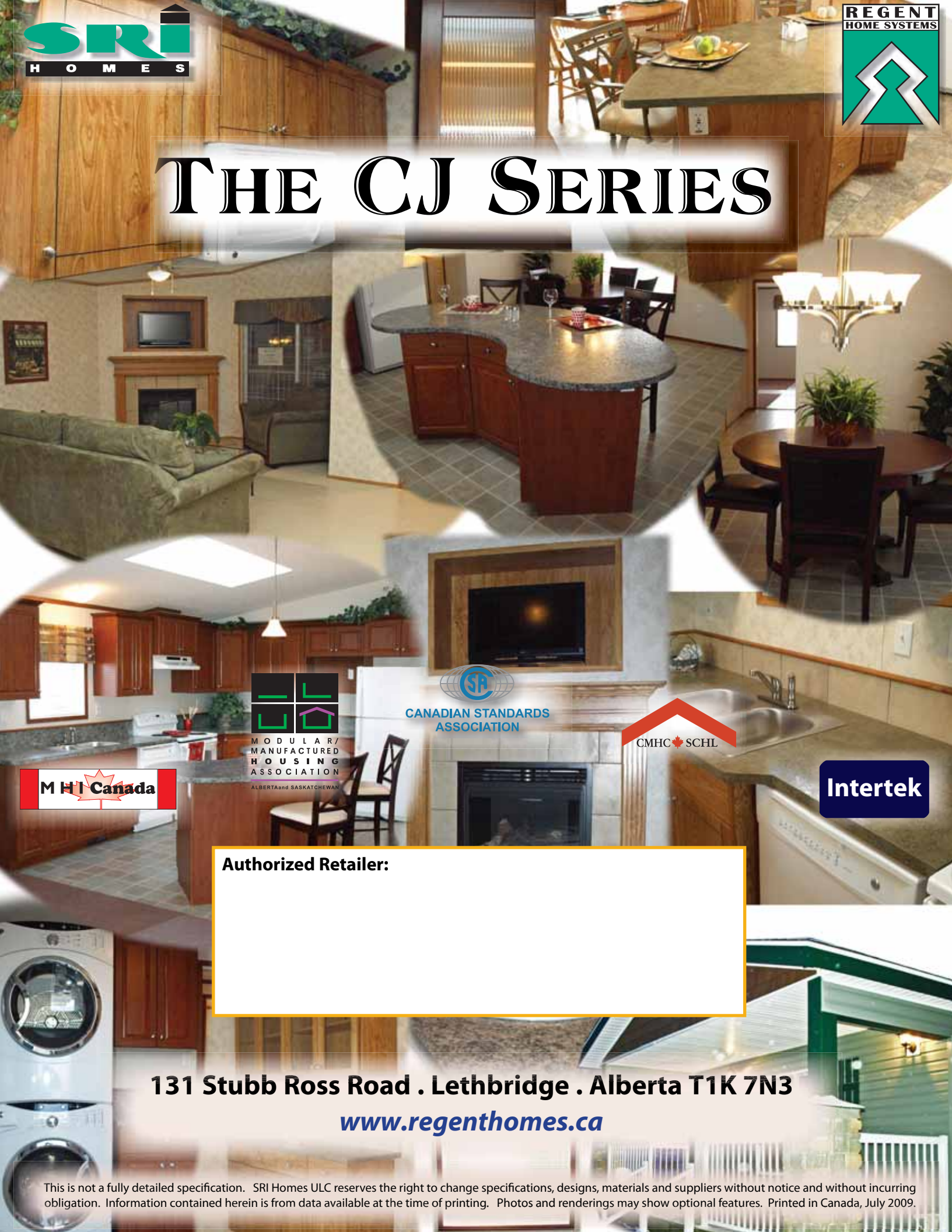
UTILITIES

- Gas Fireplace c/w Air Circulating Fan
- 40 Gallon U.S. Gas Water Heater
- Forced Air Electric Furnace
- Air Conditioner-Ready Furnace
- Washer and Dryer
- Stacking Washer and Dryer
- Central Vacuum System
- Roughed in for Central Vacuum
- 200 Amp Service Panel
- Extra Telephone Jack(s)

The CJ Series was created as a tribute to Carl Johnson, the founder of SRI Homes. Over the years, Carl contributed enormously to the manufactured housing industry in Canada. He served tirelessly for over 30 years as a director on various Provincial and National Manufactured Housing Associations. He received numerous awards for industry service, including the 1992 BC Association's Pioneer Award for outstanding contribution and influence over the years.



THE CJ SERIES



CANADIAN STANDARDS
ASSOCIATION



MHI Canada

Intertek

Authorized Retailer:

131 Stubb Ross Road . Lethbridge . Alberta T1K 7N3

www.regenthomes.ca