



Proudly made in
Canada
to Canadian
Standards

The North and Galaxy Series



20' Wide

Single Section Homes



STANDARDS AND SPECIFICATIONS

For over **30 years**, SRI has been providing Canadian families with **attractive affordable housing** that now totals over **25,000 homes**. Not only is your SRI Home warranted for one year on materials and workmanship, your SRI home also carries a **10 year structural warranty**.



The Northl and Galaxy Series

Exterior

- * Maintenance Free Vinyl Siding and Trim
- * Window Accents on Front and Side of Home
- * Shakes in End and Side Gables with Knee Brace Accent
- * Colour Coordinated Wood Fascia
- * Third Gable over Living Room Window
- * Stone Accents on Two Corners
- * Attractive Residential Eaves on all Four Sides
- * Insulated Steel Exterior Doors, 36", 32" at Rear, with Deadbolts
- * 4/12 Pitch Roof with 25 Year Fibreglass Shingles
- * Engineered Roof Trusses
- * 2x6 Exterior Walls with "RIGID-LAM"
- * Engineered 12" "I" Joist, 16" o.c.
- * Weatherproof Outside Receptacle protected with GFI at Front Door
- * Perimeter Eave Venting System
- * Exterior Frost Free Tap complete with Check Valve
- * Coach Lights at All Exterior Doors
- * Separate Receptacle for Heat Tape

Interior

- * Low "E", Argon Energy Efficient Windows with Screens and Security Latches
- * Cathedral Ceiling in Kitchen, Dining Room and Living Room
- * Decorative Vinyl Covered Drywall
- * Stainmaster Carpet in Living Room, All Bedrooms, Hall and Family Room (where applicable)
- * Vinyl Floorcoverings elsewhere
- * Satin Platinum Hardware and Light Fixtures Package
- * Solid Shelving in all Closets
- * Colour Coordinated Window Valances with 2" Blinds and Full Drapes in the Living Room
- * Insulation Values=R40 in Ceiling, R20 in Side Walls and R28 in Floors
- * 5/8" Subfloor-Glued, Nailed and Screwed
- * 6 ml. Vapour Barrier on all Exterior Walls including under Switches and Receptacles

Kitchen

- * 18 cu. ft. 2-Door White Frost Free Refrigerator
- * 30" Electric Range complete with Clock and Timer
- * 2-Speed Rangehood Fan with Light-Vented to Exterior
- * Deluxe Raised Panel Doors on Modular Cabinets with backs and Crown Moulding
- * Adjustable shelves in Upper and Lower Cabinets
- * Roller Drawer Slides on all Drawers
- * Soft Close Hinges
- * Laminated Countertops with 6" laminate backsplash with bullnose
- * Microwave Cabinet with Separate Circuit
- * Double Stainless Steel Sink
- * Single Lever Faucet with Vegetable Sprayer
- * Dishwasher Ready
- * White Kitchen Appliances - Black Optional

Bathroom

- * Walled Tub/Shower Complete with Single Lever Pressure Balanced Faucet in All Bathrooms
- * Single Lever Faucet at Vanity Sink
- * Water Saving Shower Heads
- * Low Flush Toilets
- * Shower Rods and Shower Curtain Liner in All Bathrooms
- * Cosmetic Cabinet in Main Bathroom
- * Laminated Countertops with Backsplash
- * Super Quiet Exhaust Fans in each Bathroom
- * Humidistat in Main Bathroom
- * Exhaust Fan in Ensuite on Separate Switch
- * 3 Bulb Deluxe Style Light Fixture at Vanity
- * GFI Receptacle in All Bathrooms

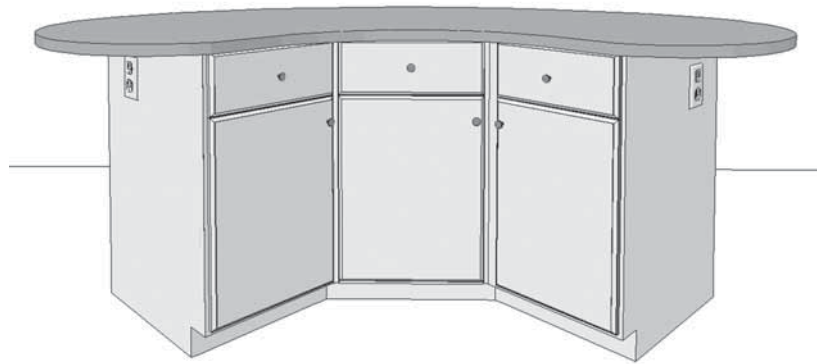
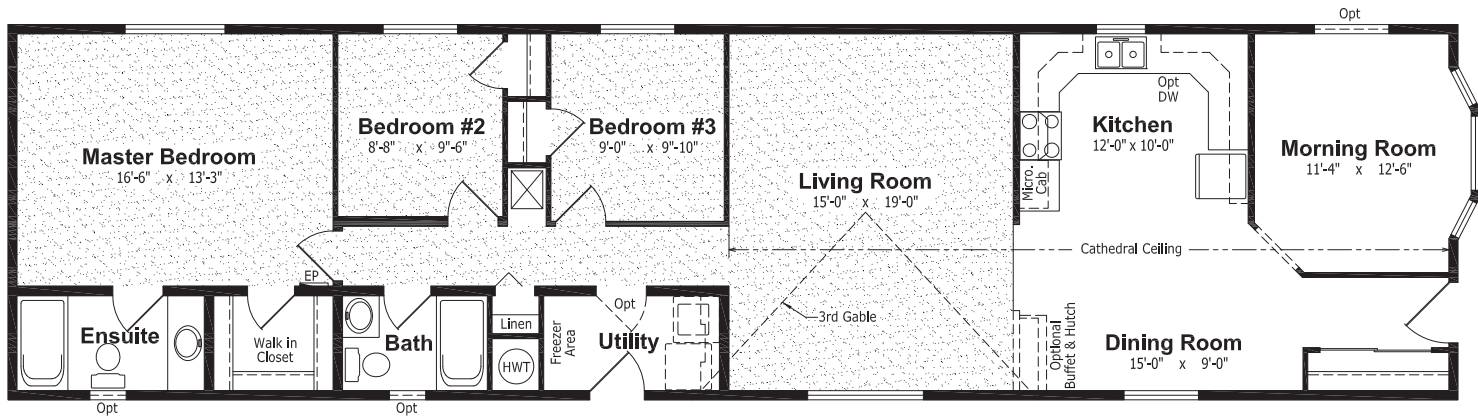
Utilities

- * Plumbed and Wired for Washer and Dryer
- * Dryer Vent Roughed in
- * Washer/Dryer Cabinet with Solid Shelf
- * 33 Imperial Gallon (40 U.S. Gallon) Gas Water Heater (Non-Convertible)
- * Gas Furnace (High Efficiency)
- * Electric Smoke Detector(s)
- * 100 amp. Service Panel
- * Electric Conduit through Floor
- * White Receptacles and Light Switches
- * Light Bulb Package
- * Built to Meet or Exceed Applicable Provincial Codes



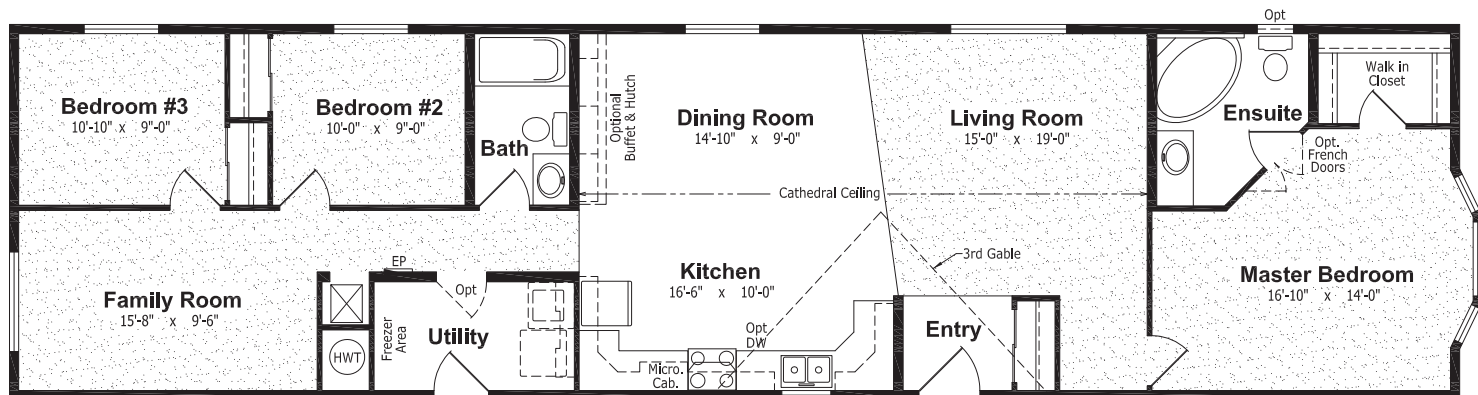
The Northland and Galaxy Series

N-2001, "The Taurus", 20' x 76', 1,520 sq. ft.



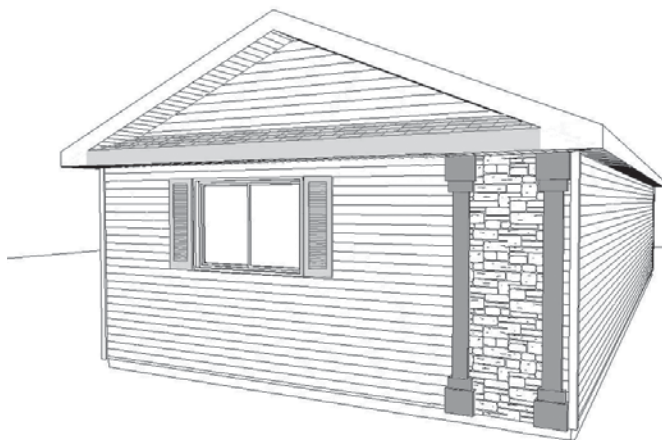
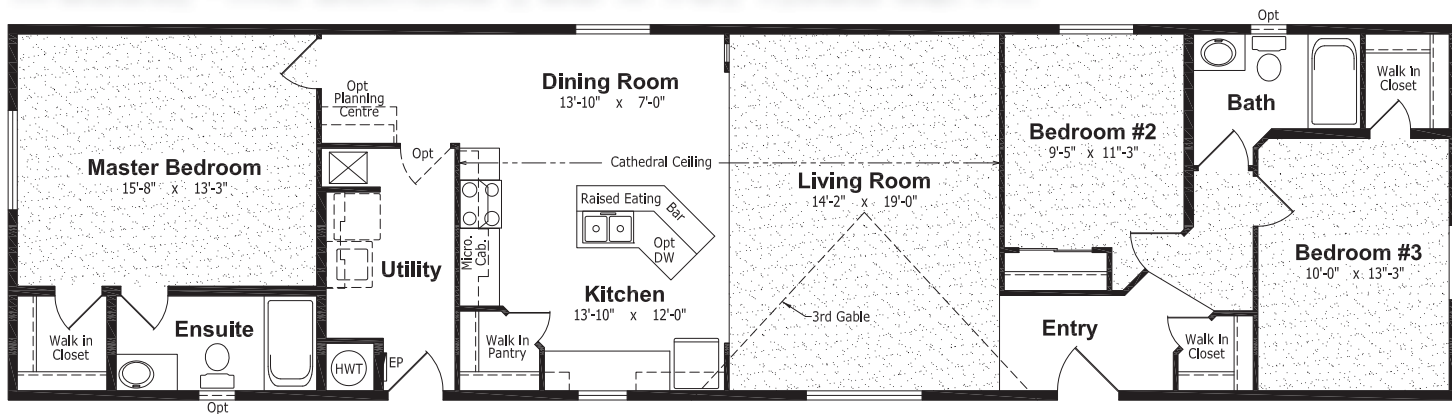
Optional "Caymen" Style Kitchen Island

N-2003, "The Orion", 20' x 76', 1,520 sq.



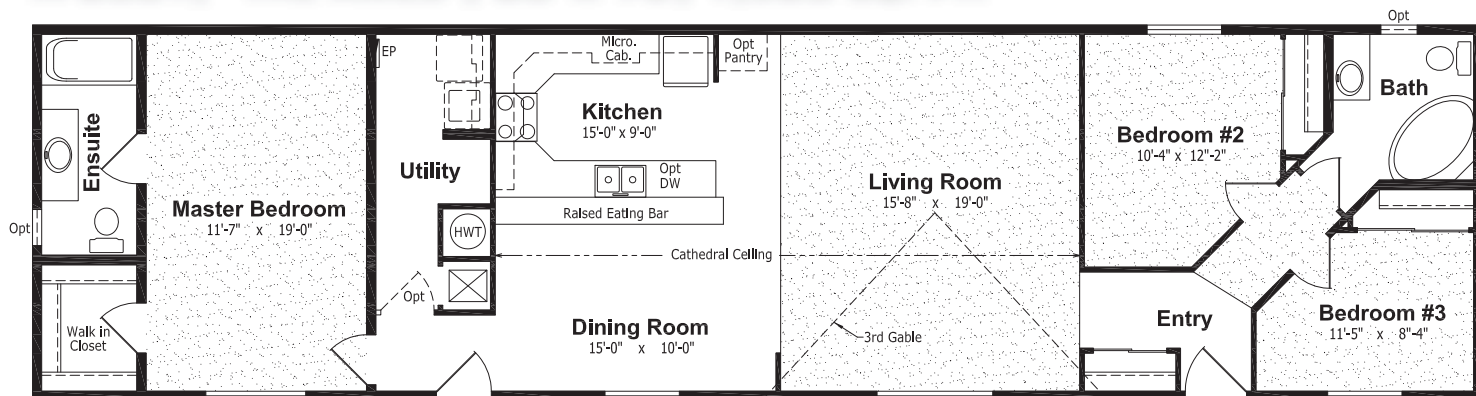
The Northland Galaxy Series

N-2005, "The Sextons", 20' x 76', 1,520 sq. ft.



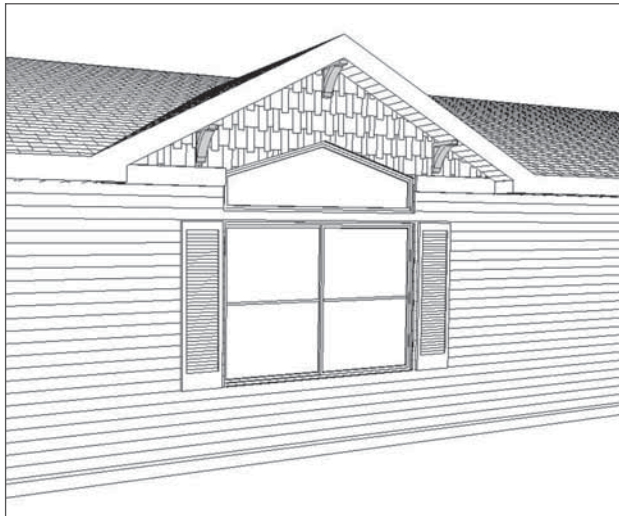
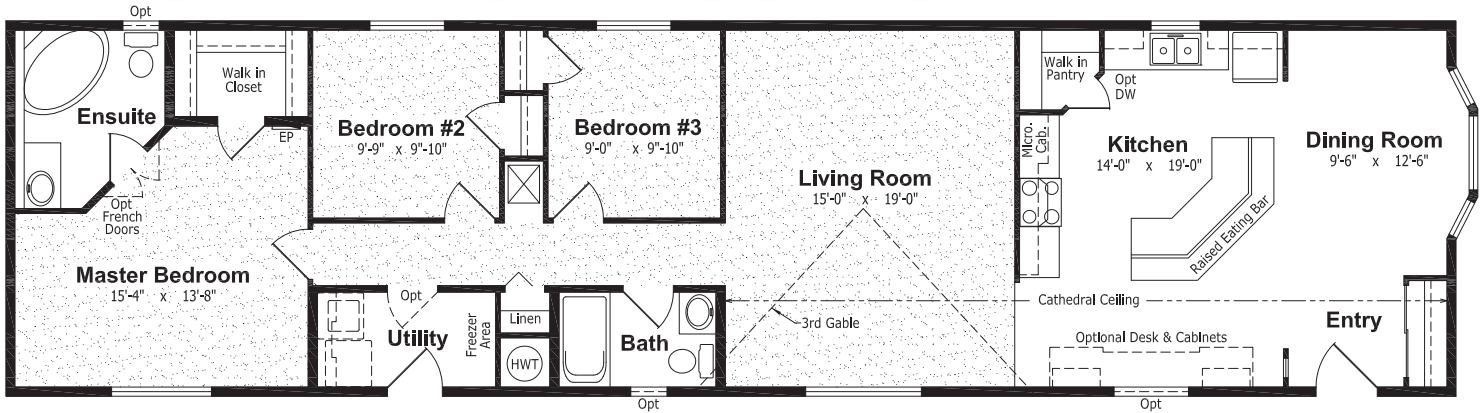
Optional Euro Pillars on End of Home with Stone Accent, "Shingle Cap" and Window Shutters

N-2007, "The Aries", 20' x 76', 1,520 sq. ft.



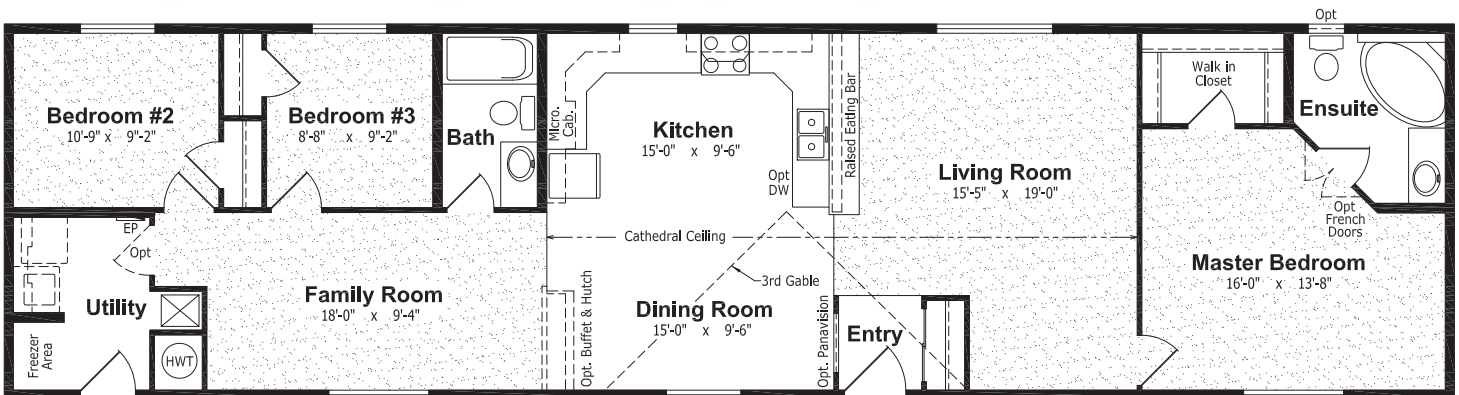
The Northland Galaxy Series

N-2009, "The Phoenix", 20' x 76', 1,520 sq. ft.



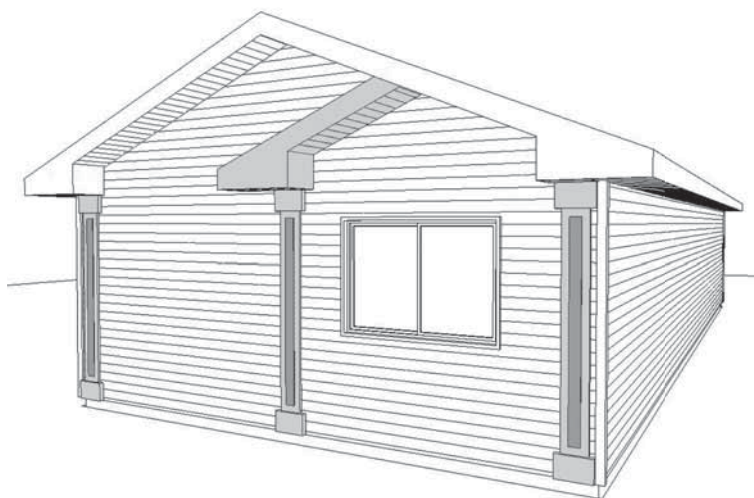
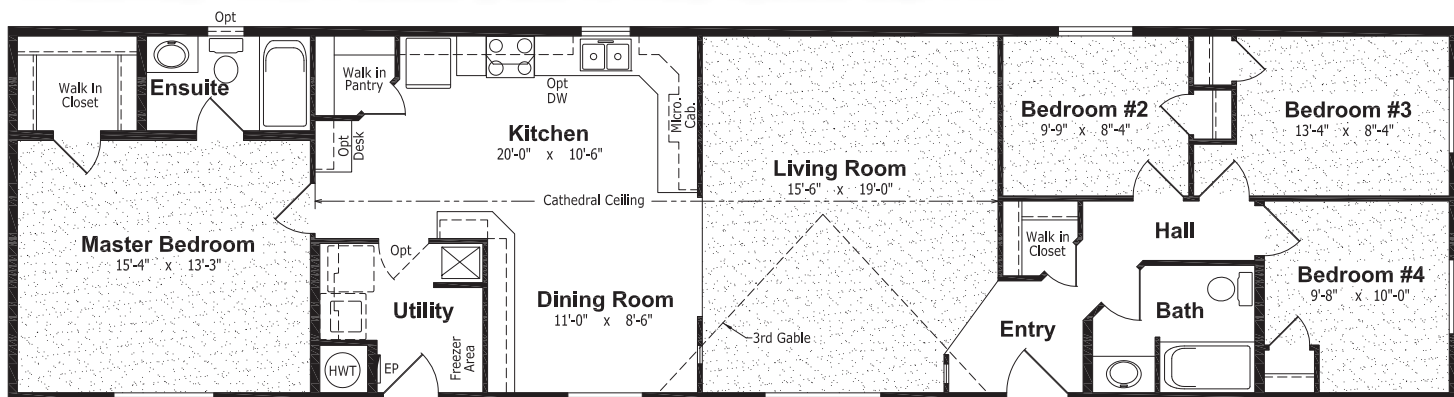
Optional "Skyview Window" in Third Gable

N-2011, "The Virgo", 20' x 76', 1,520 sq. ft.



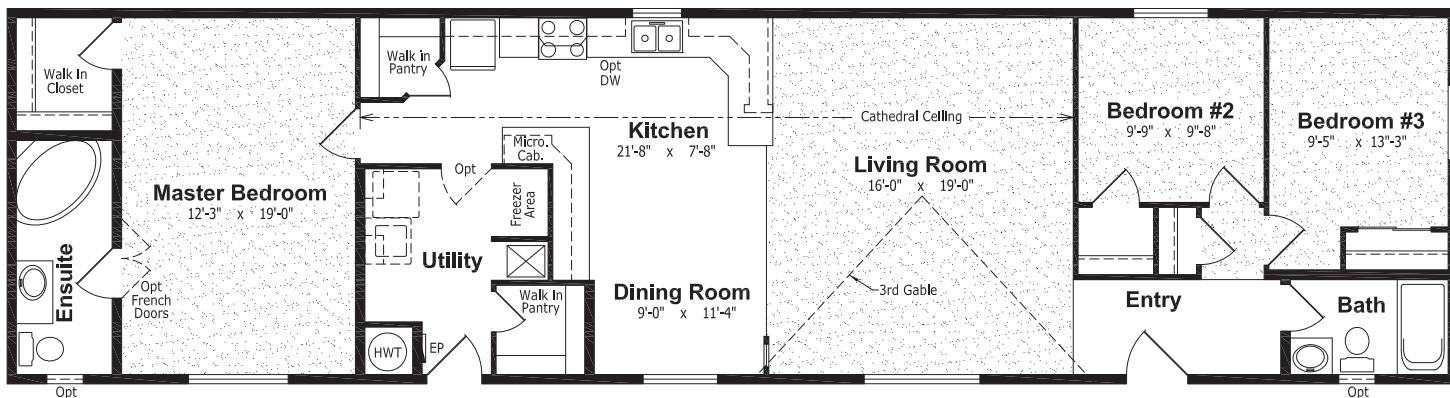
The Northland Galaxy Series

N-2013, "The Pisces", 20' x 76', 1,520 sq. ft.



Optional "Step Gable" on end of Home with Century Pillars

N-2015, "The Olympus", 20' x 76', 1,520 sq. ft.



Every home owner has different and unique requirements, so SRI offers design and decor options that reflect the current decorating trends and your personal taste.

Exterior

- Walk-a-Bay and Box Bay Windows
- Upgrade or Additional Shutters
- Vinyl Brick Siding
- Storm Doors
- 36" Exterior Rear Door
- Exterior Door with 9 Lite or 15 Lite Insert or Franklin Insert
- Exterior Door with 1/2 Round Insert or with 22" x 36" Embossed Insert
- Patio, Garden and Cottage Doors
- Pewter Lattice in Windows
- "Hextop" Windows
- Acrylic Block Windows
- Festoon Windows
- Skyview Windows
- Atrium Windows
- Octagon Windows
- Skylights
- Electric Door Chimes
- Exterior Pot Lights

Interior

- Fully Finished Painted Drywall
- Berber Carpet
- Stratos Ceiling
- Diamond Cut Ceiling
- 8' Side Walls
- Carmelle or Colonial Oak Passage Doors
- French Door(s) with Sheer(s)
- Utility Room Door complete with Grill
- White Moulding Package
- Chair Rail
- Accent Wall with Glass
- Laminate Flooring
- Upgrade Vinyl Floorcoverings
- Decora Switch Package
- Ceiling Fan with Lights
- Upgrade Chandelier (Pewter)
- Paintable Ceramic Wall Sconce
- Track Lighting with Dimmer
- 4' Fluorescent Light - Ceiling Mount or Recessed

Kitchen

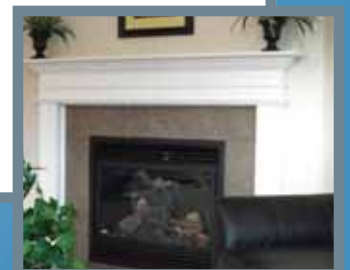
- Over 30 different Cabinet Door Combinations available in Monterrey, Montana, Shaker, Deluxe PVC and Solid Styles
- High Definition Counter Tops
- Ceramic Tile Backsplash
- China Cabinets and Hutches
- Pantry
- Built-In Energy Star Dishwasher
- Combination Microwave/Rangehood
- Gas Range
- Black Appliances
- Two Door Side by Side Refrigerator
- Island Work Centres
- Pot and Pan Drawers
- Lazy Susan
- Appliance Garage
- Granite Countertops

Bathroom

- Ceramic Tile Backsplash
- Oval Tub (Jetted)
- Soaker and Spa Tubs (Jetted)
- 36", 48" or 60" Shower With Glass Door
- Banjo Countertop on Vanity
- Tri Mirror Medicine Cabinet

Utilities

- Gas or Wood burning Fireplace with Air Circulating Fan
- Home Theatre Package
- Central Vacuum System
- Rough-In for Central Vacuum System
- Washer/Dryer
- Electric Water Heater
- Electric Furnace with 200 Amp. Electrical Service
- Oil Gun Furnace
- Air Conditioner Ready Furnace
- Additional Telephone Jacks
- Garage Ready Package
- "ENERGUIDE" Energy Packages





The Northland Galaxy Series



Authorized Retailer:

131 Stubb Ross Road . Lethbridge . Alberta T1K 7N3
www.regenthomes.ca

This is not a fully detailed specification. SRI Homes ULC reserves the right to change specifications, designs, materials and suppliers without notice and without incurring obligation. Information contained herein is from data available at the time of printing. Photos and renderings may show optional features. Printed in Canada, May 2010.