



NORTHLAND VILLA

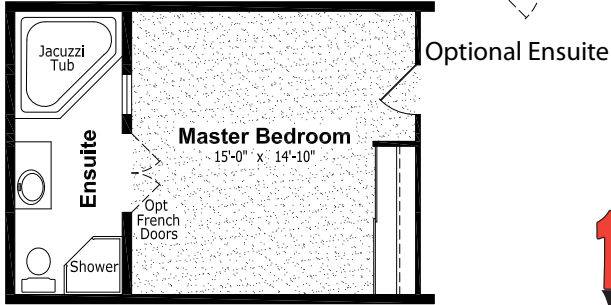
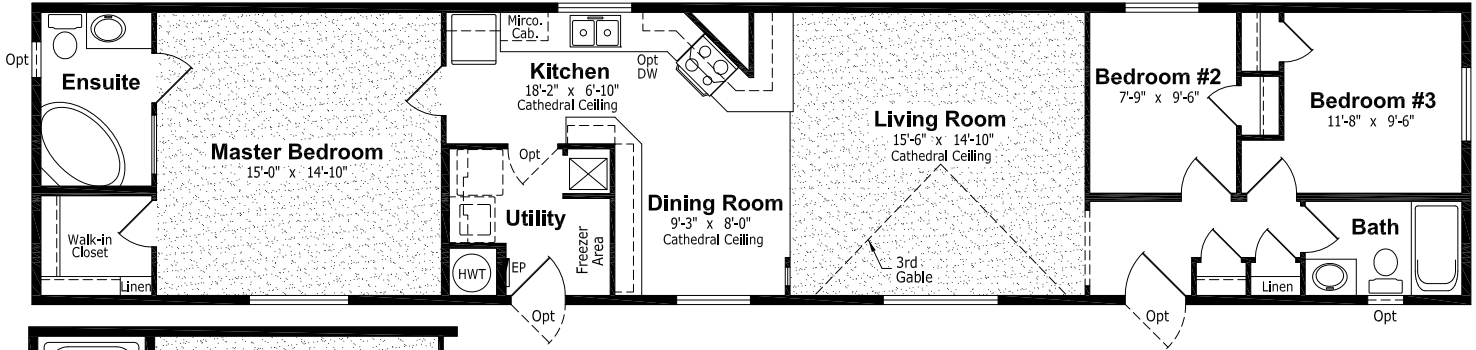


16' WIDE HOMES

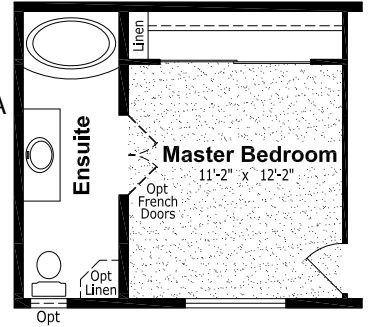


NORTHLAND VILLA

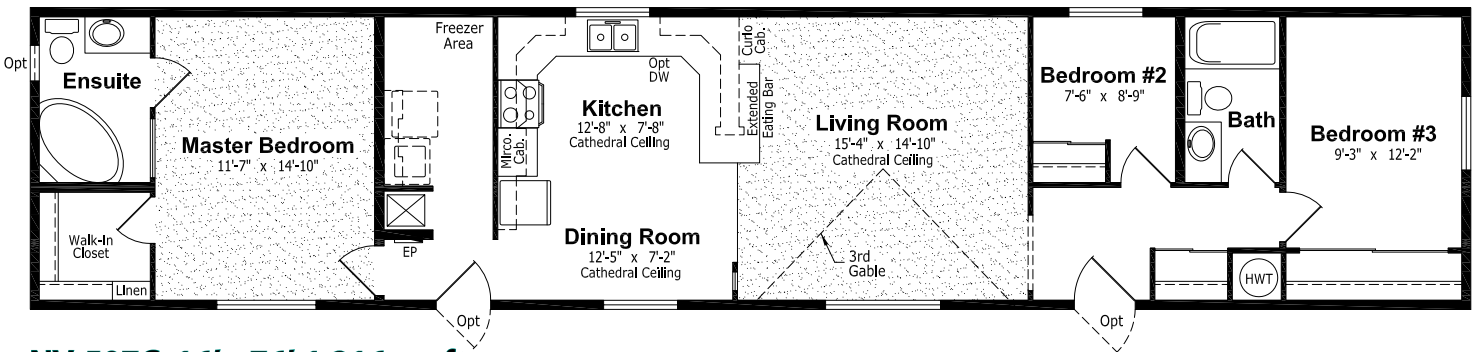
NV-505A, 16' x 76', 1,216 sq. ft.



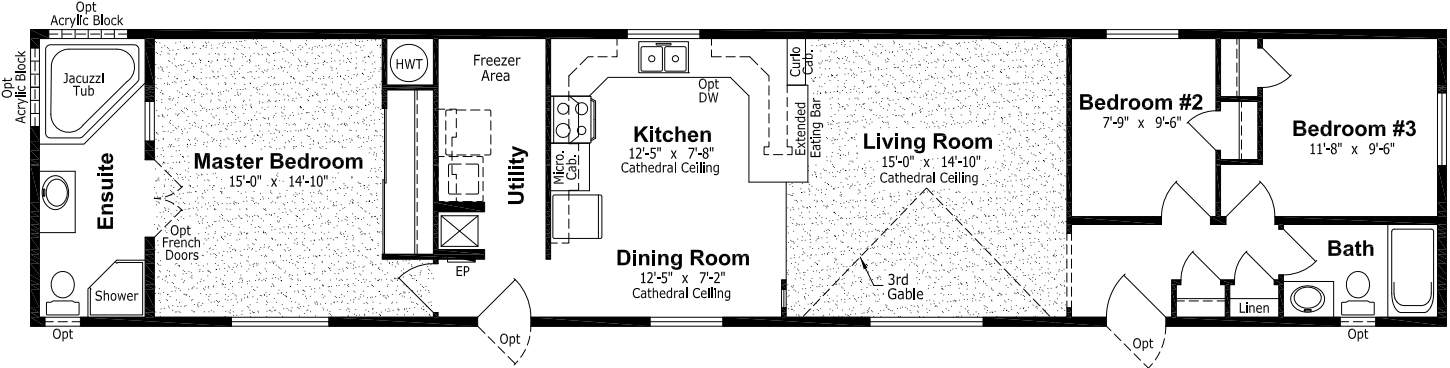
Optional Ensuite
for Model NV-511A
(opposite page)



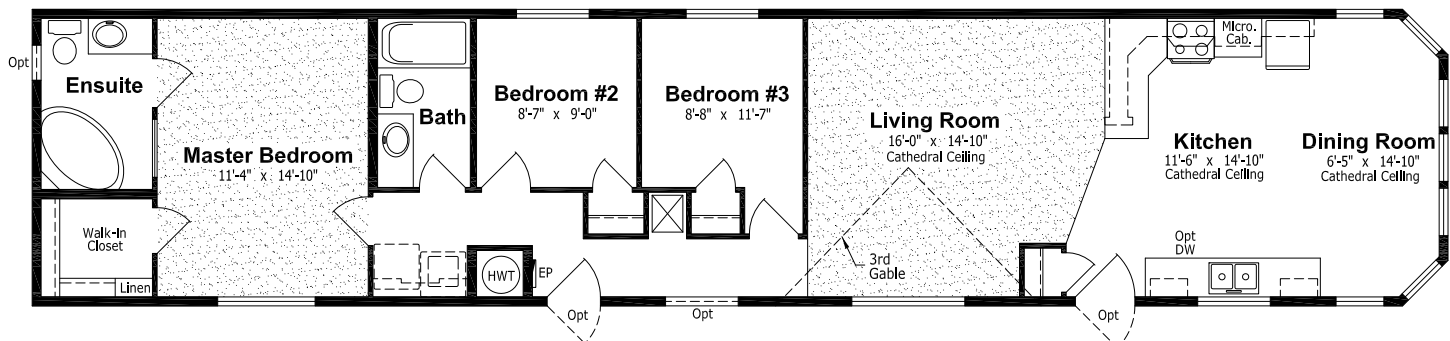
NV-507B, 16' x 76', 1,216 sq. ft.



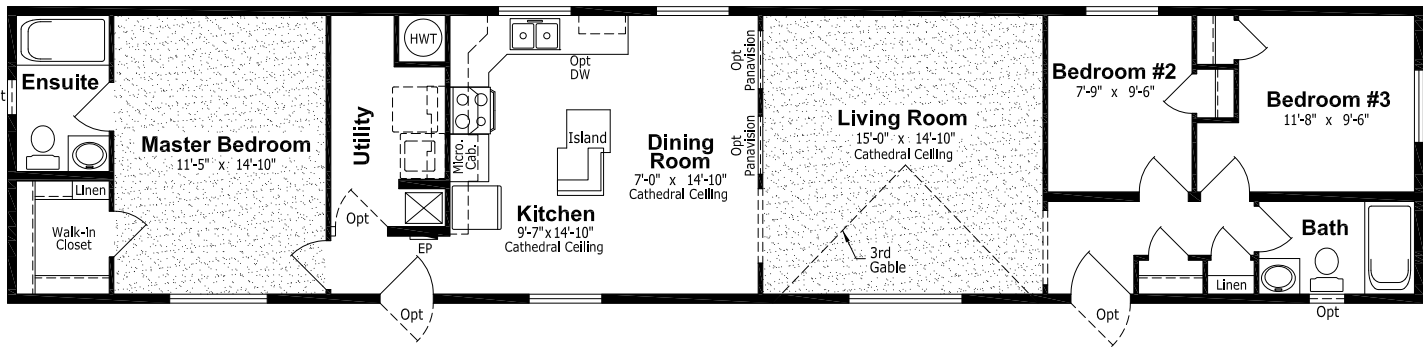
NV-507C, 16' x 76', 1,216 sq. ft.



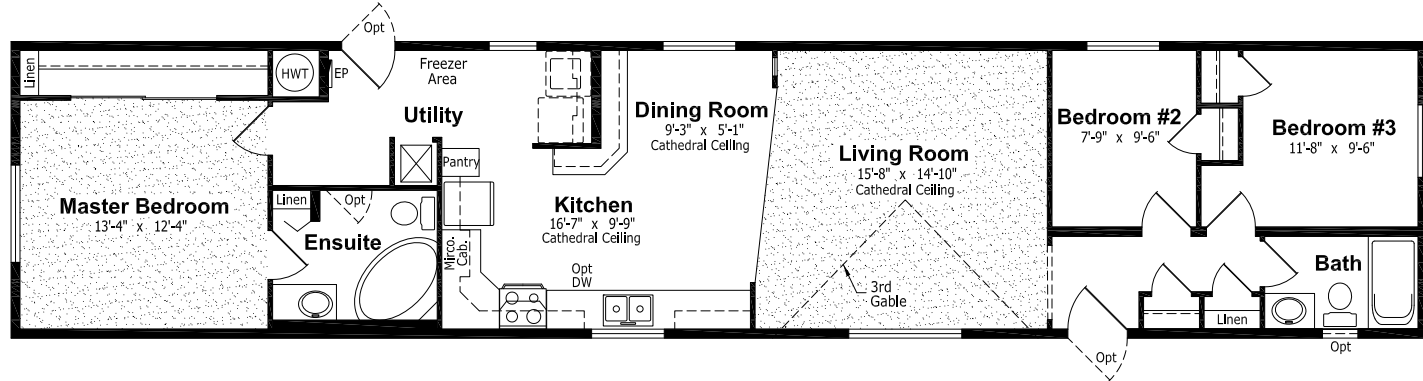
NV-509A, 16' x 76', 1,216 sq. ft.



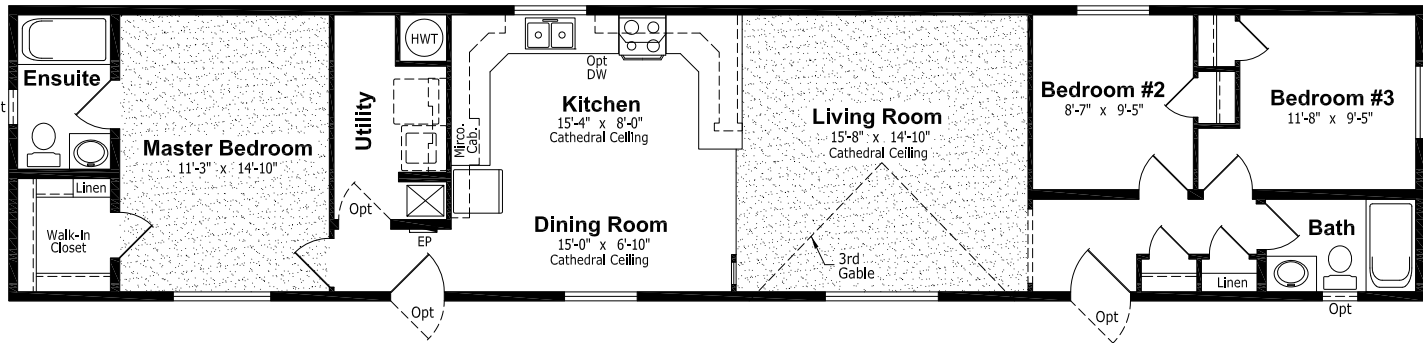
NV-511A, 16' x 76', 1,216 sq. ft.



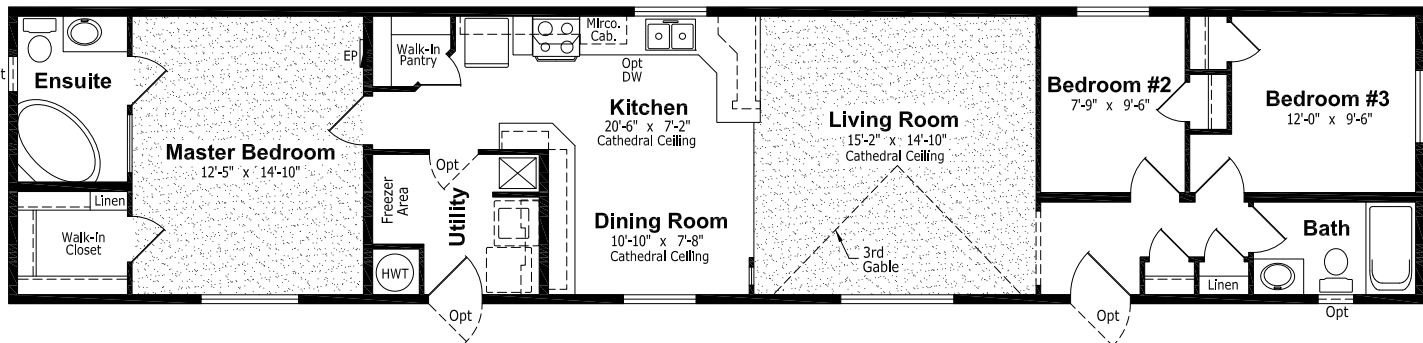
NV-515A, 16' x 76', 1,216 sq. ft.



NV-517A, 16' x 76', 1,216 sq. ft.



NV-523B, 16' x 76', 1,216 sq. ft.



AUTHORIZED RETAILER:

131 Stubb Ross Road, Lethbridge, Alberta T1K 7N3
www.regenthomes.ca

This is not a fully detailed specification. SRI Homes ULC reserves the right to change specifications, designs, materials and suppliers without notice and without incurring obligation. Information contained herein is from data available at the time of printing. Photos and renderings may show optional features. Printed in Canada, December 2009.

NORTHLAND VILLA

Standards and Specifications

EXTERIOR

- ◆ Vinyl Siding and Corners
- ◆ Colour Coordinated Painted Wood Fascia
- ◆ Colour Coordinated Window Treatment on Front Side and Front End of Home
- ◆ Gable over Living Room window with Shakes and Decorative Ledge
- ◆ 25 Year Shingles Roof
- ◆ 4/12 Pitch Roof
- ◆ Insulated 6 Panel Steel Exterior Doors, 36" at Front and 32" at Rear; both with Lever Handles, Peepholes and Deadbolts
- ◆ 2x6 "Rigid Lam" Exterior Walls
- ◆ 2x10 Floor Joists-16" o.c.
- ◆ Engineered Roof Trusses
- ◆ Residential Eaves on 4 Sides
- ◆ Exterior GFI at Front Door
- ◆ Exterior Frost Free Tap
- ◆ Coach Lights at All Exterior Doors
- ◆ PVC Windows complete with Screens
- ◆ Separate Receptacle for Heat Tape

INTERIOR

- ◆ Cathedral Ceiling in Living Room, Dining Room and Kitchen
- ◆ Decorative Vinyl Covered Drywall
- ◆ Decorative Glass Divider Wall (Most Models)
- ◆ Insulation Values=R-34 in Ceiling, R-20 in Side Walls and R-28 in Floors
- ◆ 5/8" Subfloor-Glued, Nailed and Screwed
- ◆ Upgrade Carpeting in Living Room and Master Bedroom
- ◆ Quality Vinyl Floor Covering
- ◆ Solid Shelving in all Closets
- ◆ Satin Platinum Hardware, Lighting and Plumbing Fixtures
- ◆ White Receptacles and Light Switches
- ◆ Ceiling Lights in all Bedrooms

KITCHEN

- ◆ 18 cu. ft. Frost Free Refrigerator
- ◆ 30" Electric Range with Clock and Timer
- ◆ 2-Speed White Rangehood Fan with Light-Vented to Exterior
- ◆ Shaker Style Raised Panel Modular Cabinets with Backs
- ◆ Crown Moulding on Kitchen Cabinets
- ◆ Laminated Countertops with 6" Laminated Backsplash with bullnose
- ◆ Microwave Cabinet with Separate Circuit
- ◆ Double Stainless Steel Sink
- ◆ Plumbed and Wired for Dishwasher
- ◆ Light in Walk-In Pantry
- ◆ Single Lever Faucet with Vegetable Sprayer

BATHROOM

- ◆ Walled Tub/Shower Complete with Single Lever Pressure Balance Faucet in All Bathrooms
- ◆ Shower Head, Shower Rod and Shower Curtain Included in All Baths
- ◆ Exhaust Fan complete with Humidistat in Main Bath
- ◆ Exhaust Fan in Ensuite on Separate Switch
- ◆ Cosmetic box in Main Bath
- ◆ 3 Bulb Deluxe Light Fixture in all Baths
- ◆ Single Lever Faucets in all Baths
- ◆ GFI Receptacle

UTILITIES

- ◆ 33 Imperial Gallon (40 U.S. Gallon) Natural Gas Water Heater
- ◆ High Efficiency Natural Gas Furnace with Electronic Ignition
- ◆ Electric Smoke Detector(s)
- ◆ Plumbed and Wired for Washer/Dryer
- ◆ 100 amp. Service Panel
- ◆ Electric Conduit through Floor
- ◆ Built to Applicable Provincial Codes

Optional Features

EXTERIOR

- Euro Pillars
- Diamond Cut Ceilings
- Three and Four Light Bay Windows
- Hextop Windows
- Octagon Windows
- Acrylic Block Windows
- Angle Corner Window
- Pewter Lattice in Windows
- Skylights
- Garden, Cottage or Patio Doors
- Exterior Door with Half Round, 9 Lite or Franklin Insert
- Turbine Vents
- Electric Door Chimes
- Exterior Recessed Pot Light(s)
- Extra Exterior GFI
- High Snow Load Roof
- Storm Doors

INTERIOR

- Fully Finished Drywall
- Laminate Flooring
- Upgrade Vinyl Floor Coverings
- Chair Rail
- French Doors
- Mirrored Closet Doors
- Freezer Cabinets
- Soak Sink with Cabinet

INTERIOR (CONT'D)

- Utility Room Door
- Ceiling Fan with Lights
- Chandeliers
- Recessed Fluorescent Lights
- Pewter Hardware
- Archways

KITCHEN

- Raised Panel Cabinet Doors
- White or Maple Raised Panel PVC or Hardwood Cabinets
- Upper Glass Cabinet Doors
- Island Work Centre
- Appliance Garage
- Planning Centre
- Lazy Susan
- White or Black Sink
- Oak or Maple Counter Edging
- Corian F.E. Counter Edging
- Built-In Dishwasher
- Combination Microwave/Range Hood
- Eye Level Oven and Cook Top Range
- Self Cleaning Range
- Two Door Side by Side Refrigerator
- Black Appliances
- Free Standing Bottom Mount Refrigerator

BATHROOM

- Corner Oval Jetted Tub
- 2 Person Jetted Tub
- 60" Shower c/w Glass Doors
- Handicap Toilet
- Tri-Mirror Medicine Cabinet
- Grab Bars
- Deluxe Shower Curtain
- Banjo Countertop on Vanity

UTILITIES

- Gas Fireplace c/w Air Circulating Fan
- Air Conditioner-Ready Furnace
- Washer and Dryer
- Stacking Washer and Dryer
- Central Vacuum System
- Roughed in for Central Vacuum
- 200 Amp Service Panel
- Extra Telephone Jack(s)

